



# Global Concepts

FURNISHINGS ELEVATED

831.595.7233 or 831.768.9000

sales.globalc@gmail.com

## STORAGE SYSTEMS



### 19 WEAVE



### 21 WEB



### 23 HEDGE



A CONFIGURATION FOR  
ANY OCCASION



### 25 SHIFT



### 27 GRAVITY



# CONTENTS C

## ACOUSTIC BAFFLES



### 29 LAYER



### 31 POCKET



### 33 SKY



### 35 TEMPO



### 37 THICC



APPLE BOTTOM JEANS AIN'T  
GOT NOTHING ON THIS



# CONTINUED

## WALL COVERINGS



### 39 THIN



MODERN FINISHES FOR  
THE MODERN OFFICE

### 41 ARBOR



### 43 TANGO



### 45 TEMPO



### 47 GLIDE



# CONTENTS

## DESK DIVIDERS — ARCHITECTURAL



### 49 PIVOT



### 51 ROOMS



### 53 PARALLEL















# CONTINUED

## Product legend

Did you notice those funny symbols under each product? To help you better understand our portfolio, we made a product feature legend! See the below key!

- |  |   |
|--|---|
|  Acoustic material        |  Lead time under 10 days |
|  Hospital grade cleanable |  Best seller             |
|  Class A fire rated       |  Movable                 |
|  Recycled material        |  Award Winning           |
|  Customizable             |  Available in Turbo      |



# Global Concepts

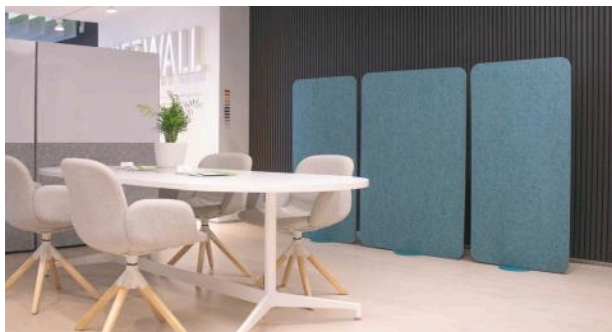
FURNISHINGS ELEVATED

831.595.7233 or 831.768.9000

[sales.globalc@gmail.com](mailto:sales.globalc@gmail.com)

## **Buffer room divider**

We worked with award-winning designers to create a partition with only the essential elements. Meet Buffer, an adjustable partition with aesthetic appeal and featuring all recycled material.





**Global Concepts**  
FURNISHINGS ELEVATED

## HEIGHT

46.5", 58.5" or 68.25"

## DEPTH

Panel 0.5"

## WIDTH

29.25", 39" or 46.5"

## NRC

0.55 - 0.65\*

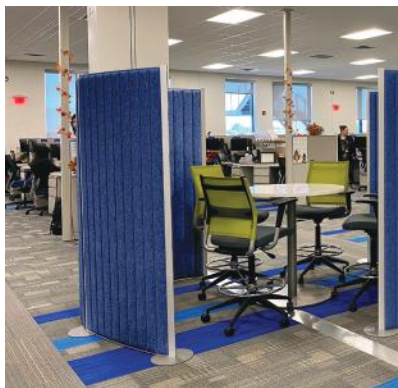


\*NRC ratings with an asterisk are not final but rather predictions based on similar products.



# Flox room divider

Modern design is beautiful, but it calls for less walls and more hard surfaces. These are the exact variables that lead to ridiculous sound levels in workspaces.





**Global Concepts**  
FURNISHINGS ELEVATED

## HEIGHT

73.25"

## DEPTH

1.5" Panel/Base 10"

## WIDTH

47" Base to Base/38.75" Frame 0.65

## NRC





**Global Concepts**  
FURNISHINGS ELEVATED

## **Frameworkall room divider**

For over 10 years, Frameworkall has been dividing and conquering spaces (and looking good doing it). Whether you're in a commercial, education, or healthcare space, trust the product with a track record of success.







**Global Concepts**  
FURNISHINGS ELEVATED

## HEIGHT

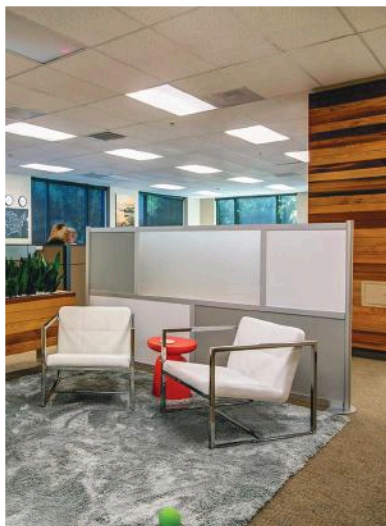
53" or 78"

## NRC

0.35 - 0.50\*

## WIDTH

52", 76" or 100"



\*NRC ratings with an asterisk are not final but rather predictions based on similar products.

# □ Split room divider

Quickly and simply dividing space is now normal, and we're ready to help you adjust to that reality.







# Global Concepts

FURNISHINGS ELEVATED

## HEIGHT

53" or 78"

## NRC

0.35 - 0.50\*

## WIDTH

40", 52", 76" or 100"



\*NRC ratings with an asterisk are not final but rather predictions based on similar products.



# Weave room divider

A curvy take on a Loftwall classic. Our knife-cut PET panels interlock in a beautiful pattern to add definition and an element of acoustic privacy to your space.





**HEIGHT**

53" or 78"

**NRC**

0.35 - 0.50\*

**WIDTH**

48" or 72"



\*NRC ratings with an asterisk are not final but rather predictions based on similar products.

## Web room divider

Make a statement in your space while defining it. Our award winning Web can delineate areas of interest and focus in a space. Deliver perceived privacy without completely obstructing natural light.







# Global Concepts

FURNISHINGS ELEVATED

## HEIGHT

53" or 78"

## DEPTH

Screen 1.75"/Base 13"

## WIDTH

52", 76" or 100"

## NRC

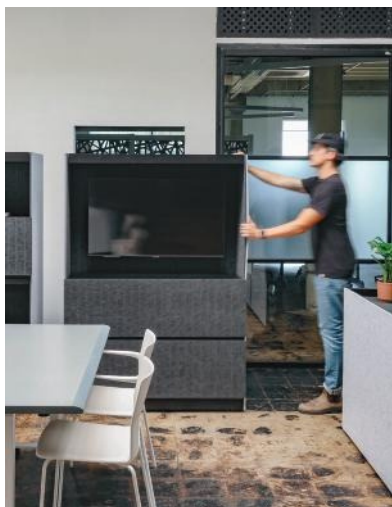
0.35 - 0.50\*



\*NRC ratings with an asterisk are not final but rather predictions based on similar products.

# Hedge storage system

Define and divide your space with Hedge: a mobile, acoustic shelving solution that blends storage, style, and flexibility seamlessly.





**Global Concepts**  
FURNISHINGS ELEVATED

## HEIGHT

34.5" or 67.5"

## DEPTH

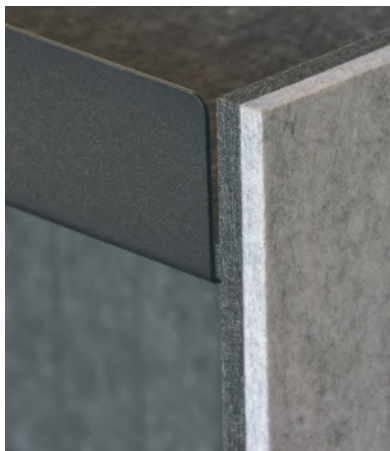
17.75"

## WIDTH

46.5"

## NRC

0.60





# Shift architectural

Shelving is an office necessity, making it boring is not. Add flair to your environment with a thoughtful, modern shelving solution that divides space, offers storage, and looks good doing it.







**Global Concepts**  
FURNISHINGS ELEVATED

## HEIGHT

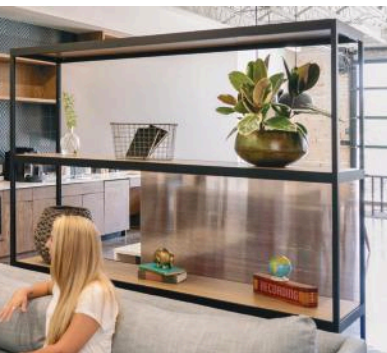
52.625" or 77.75"

## DEPTH

17.25"

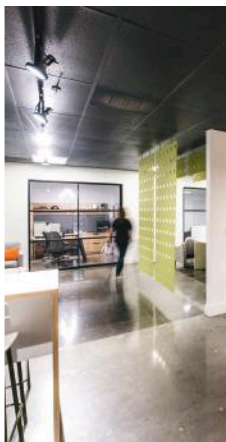
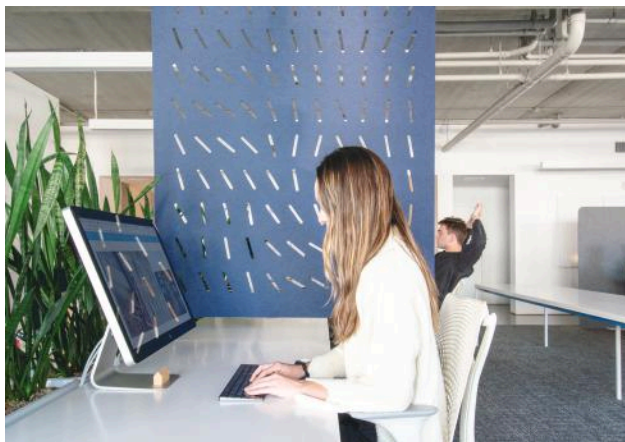
## WIDTH

48" or 72"



# Gravity acoustic baffle

Drop in privacy anywhere. Available with a variety of ceiling and floor mounts, Gravity was designed to work wherever you need focus.





# Global Concepts

FURNISHINGS ELEVATED

## HEIGHT

68.75" or 91.5"

## DEPTH

0.25" or 0.5"

## WIDTH

46"

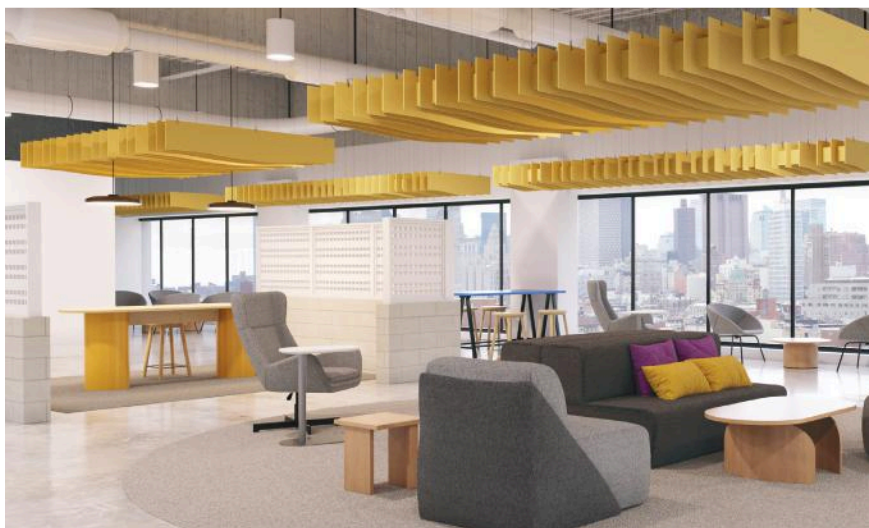
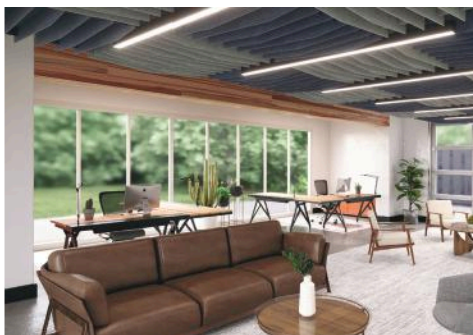
## NRC

0.25 - 0.50



# Layer acoustic baffle

Designed as a sleek grid of acoustic panels, this ceiling system sits at the intersection of high design and high performance.







**Global Concepts**  
FURNISHINGS ELEVATED

## HEIGHT

10.25"

## DEPTH

12"

## WIDTH

47.5", 72" or 92"

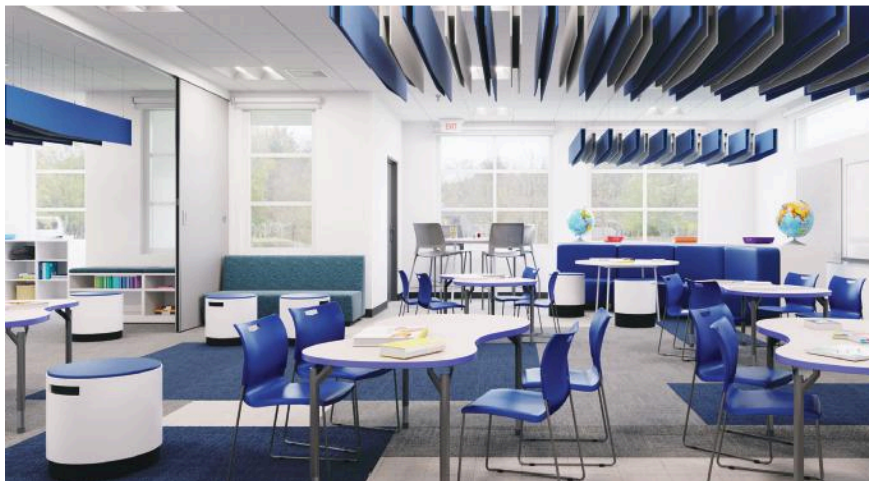
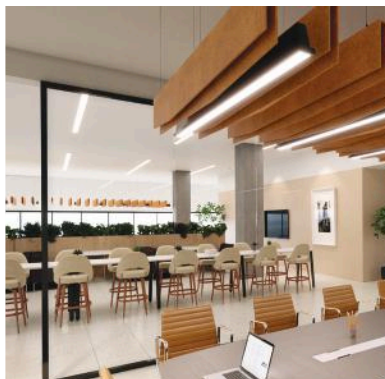
## NRC

1.5



## Pocket acoustic baffle

A ceiling-hung baffle system where design meets sustainability. Crafted from recycled plastic, Pocket Baffles come with a green story you can be proud of.





**Global Concepts**  
FURNISHINGS ELEVATED

## HEIGHT

11.75"

## DEPTH

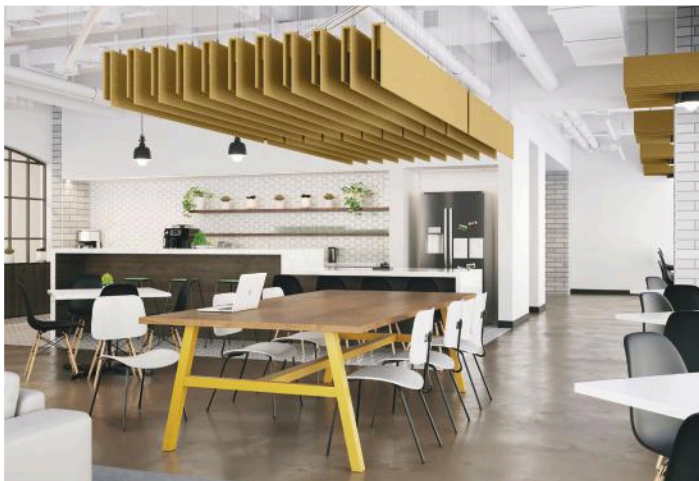
2"

## WIDTH

47.5", 72" or 92"

## NRC

1.15



# Sky acoustic baffle

Look up, you'll like the view. Sky is an acoustic baffle system that adds the finishing touches to any space.





## HEIGHT

11.75"

## WIDTH

46"

## DEPTH

0.25" or 0.5"

## NRC

0.90 - 1.05



# Tempo ceiling acoustic baffle

Acoustic eye candy. With artfully designed, noise-canceling panels, Tempo presses mute on your space while looking like a masterpiece.





**Global Concepts**  
FURNISHINGS ELEVATED

## GRID HEIGHT

11.75"

## GRID DEPTH

51"

## GRID WIDTH

47.25"

## NRC

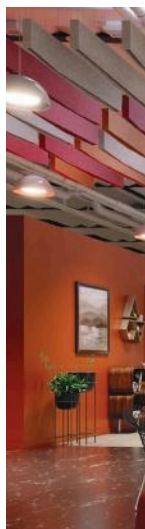
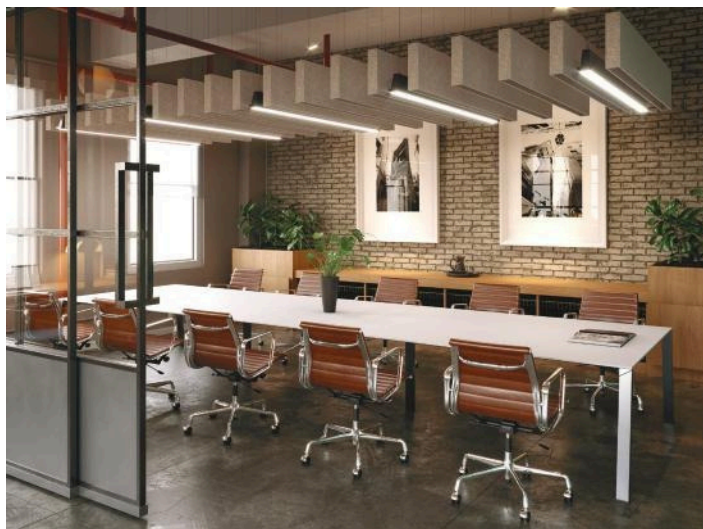
0.90 - 1.05





## Thicc acoustic baffle

Thicc baffles (yes, two c's) are ceiling panels that aren't on a diet. These heavy-duty ceiling baffles bring down the noise in any environment.







**Global Concepts**  
FURNISHINGS ELEVATED

**HEIGHT**

10.25"

**THICKNESS**

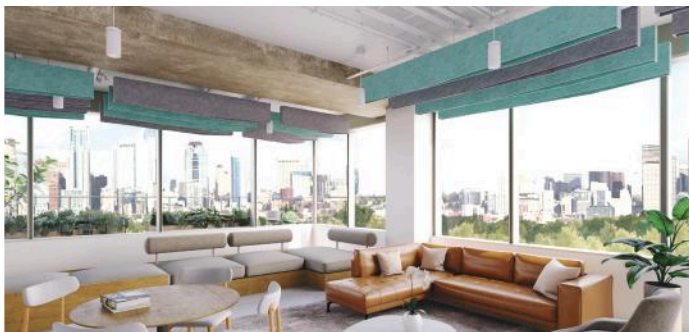
3"

**WIDTH**

47.5", 72" or 92"

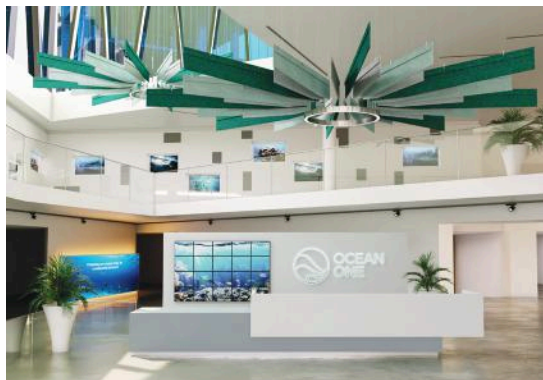
**NRC**

1.20



## Thin acoustic baffle

With an impressive 0.75 apparent NRC rating, Thin baffles can turn the volume down in any space. From hotel lobbies to office boardrooms, focus work just got easier.





**Global Concepts**  
FURNISHINGS ELEVATED

## HEIGHT

11.75"

## THICKNESS

1.06"

## WIDTH

47.5", 72" or 92"

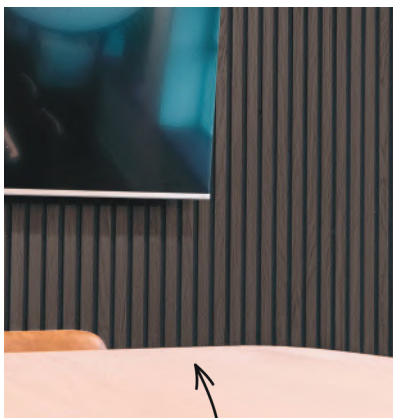
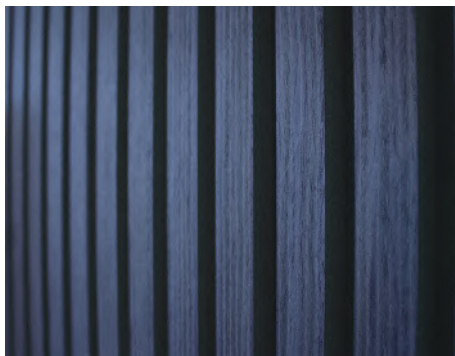
## NRC

0.75



## Arbor wall covering

Arbor is a versatile acoustic divider that combines modern design with sound absorption to create flexible, visually striking spaces, now available in the Arbor Reserve line with an expanded selection of premium finishes.



Arbor  
**RESERVE**





# Global Concepts

FURNISHINGS ELEVATED

## HEIGHT

94.48" or 118.11"

## DEPTH

0.8125" or 0.4062"

## WIDTH

23.62"

## NRC

0.70 - 0.80





# Tango wall covering

Wall-mounted acoustic panels available in dozens of finishes and countless styles! The easiest acoustic solution we have!





# Global Concepts

FURNISHINGS ELEVATED

## HEIGHT

94.5" or 120"

## DEPTH

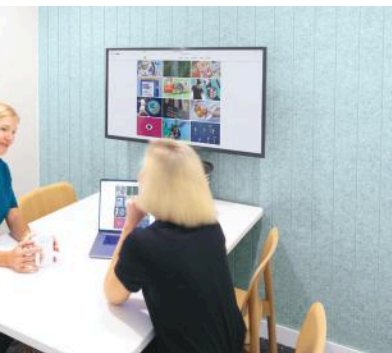
0.825" or 0.393"

## WIDTH

23.6"

## NRC

0.20 - 0.40





## Tempo wall covering

You shouldn't need to be an acoustic engineer to improve the sound quality of your space. We studied the intricacies of sound waves so you didn't have to.





**Global Concepts**  
FURNISHINGS ELEVATED

**GRID HEIGHT**

48.25"

**PANEL THICK.**

0.25" or 0.50"

**GRID WIDTH**

47.25"

**NRC**

0.65 - 0.75\*



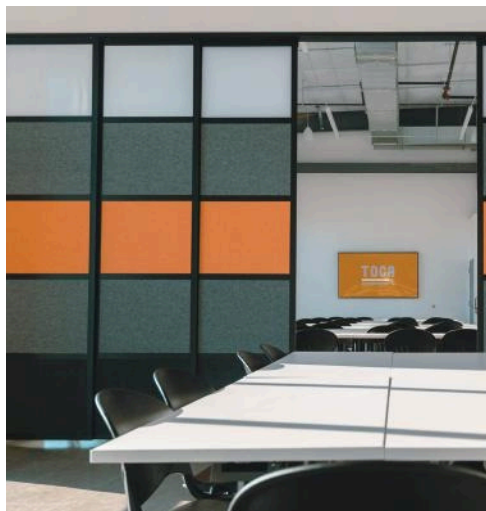
\*NRC ratings with an asterisk are not final but rather predictions based on similar products.





# Glide architectural

An overhead sliding room divider system where customization comes standard.





**Global Concepts**  
FURNISHINGS ELEVATED

## HEIGHT

78", 103" or 128"

## DEPTH

Panel .75" / Track 1.31"

## WIDTH

50", 76" or 98"

## NRC

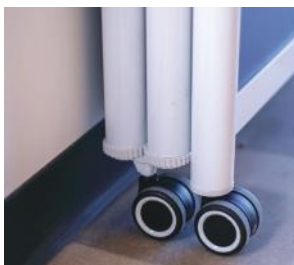
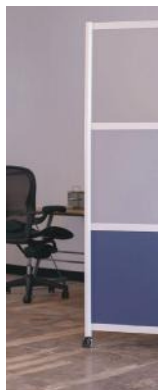
0.35 - 0.50\*



\*NRC ratings with an asterisk are not final but rather predictions based on similar products.

# Pivot architectural

When space is limited and flexible privacy is needed, Pivot is the remedy. Utilizing a caster and gear system, Pivot moves effortlessly from grand and full to subtle and minimal.





**Global Concepts**  
FURNISHINGS ELEVATED

## HEIGHT

56.875", 82"

## NRC

0.35 - 0.50\*

## WIDTH

76.75", 114.5" or 152.25"

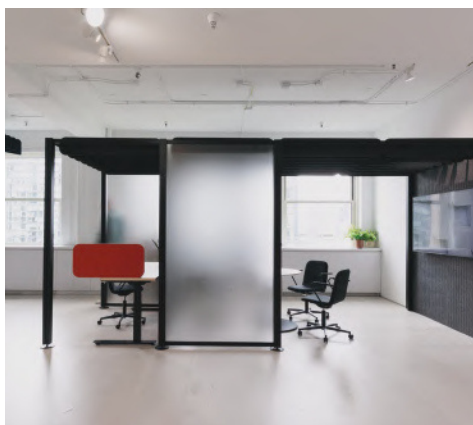
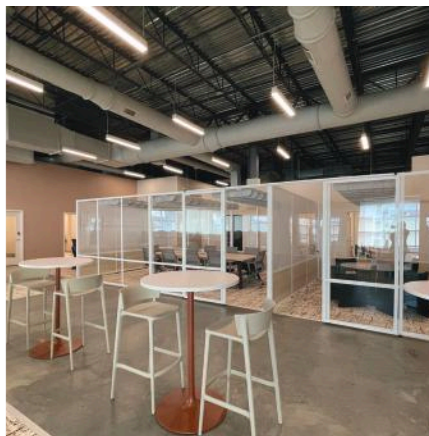


\*NRC ratings with an asterisk are not final but rather predictions based on similar products.



# Rooms architectural

A demountable partition system that replaces drywall. With sliding track doors and felt acoustic ceiling baffles available, Rooms offers more than drywall ever could.







**Global Concepts**  
FURNISHINGS ELEVATED

## WALL DIM.

Height: 90.5" - 92"

Width: 24", 36" or 48"

## DOOR DIM.

Height: 90.5" - 92"

Width: 36" or 48"

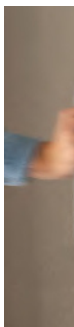
Opening: 34.25" or 46.25"





# Parallel desk divider

Desk dividers have always been missing something. Some were acoustic, some were writable, some were tack-able, some were magnetic, and some were re-positionable. But none were everything. Well, until now.



## SIDE-TO-SIDE

Height: 15" or 24"

Width: 30"

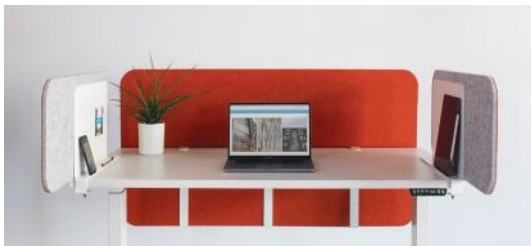
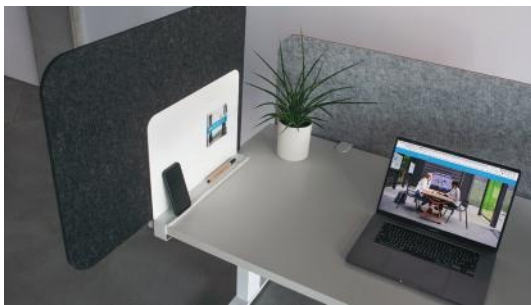
Thickness: 0.6" or 0.75"

## MODESTY

Height: 30" or 39"

Width: 48", 60" or 72"

Thickness: 0.6" or 0.75"



**Global Concepts**

FURNISHINGS ELEVATED

831.595.7233 or 831.768.9000

sales.globalc@gmail.com